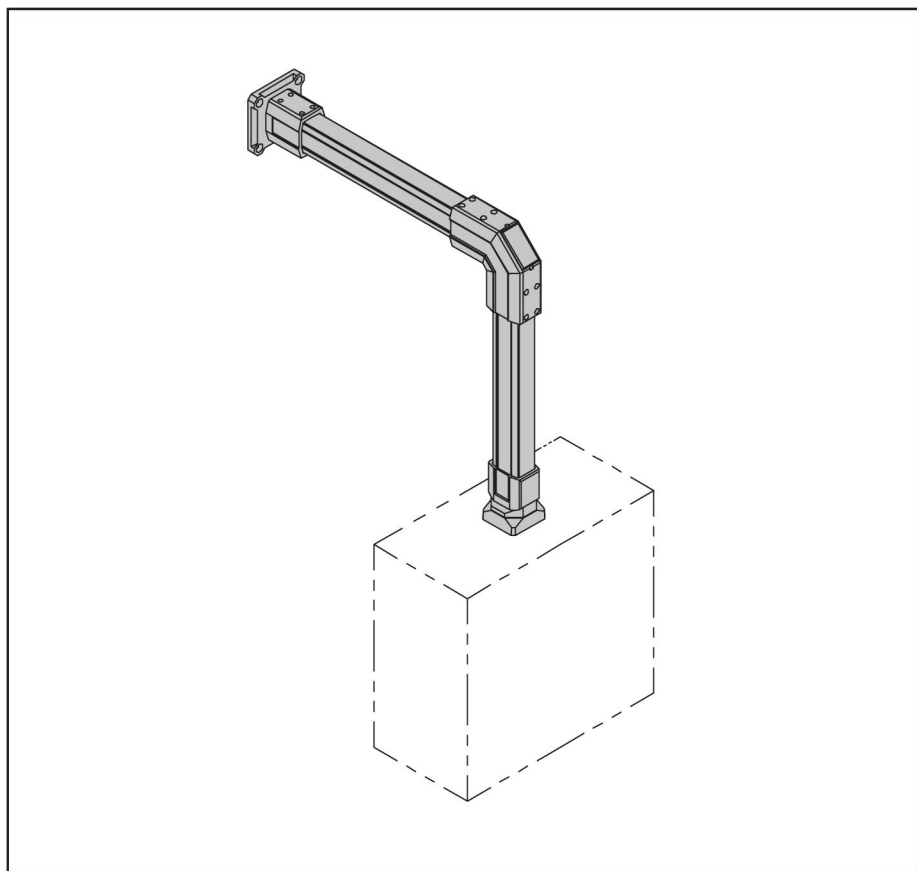




HOFFMAN

Compact

Pendant Arm Series 2
Tragarmsystem Serie 2
Système de suspension série
Sistema de suspensión



901.2087.000

Rev. I

© 2020 Hoffman Enclosures Inc.

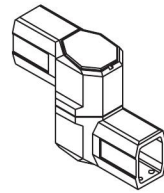
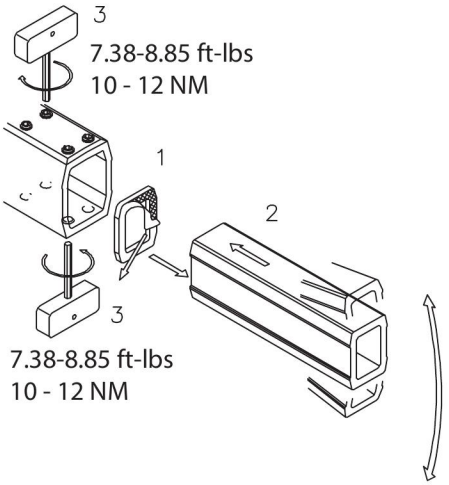
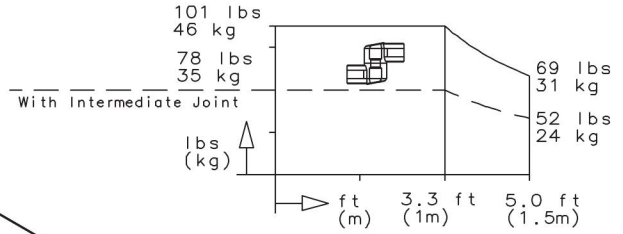
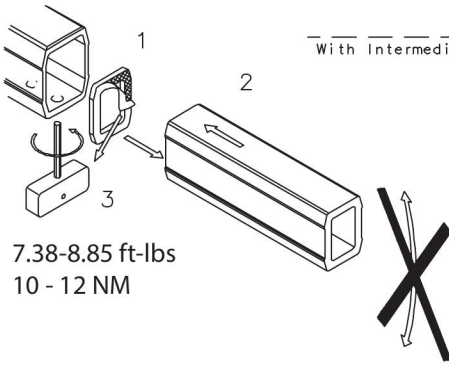
PH 763 422 2211 • nVent.com/HOFFMAN

P/N 21360001

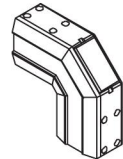
87567800



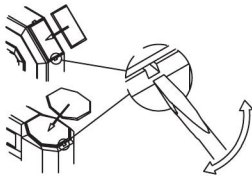
RSPSupply - 1-888-532-2706 - <https://www.RSPSupply.com>
See the product details here



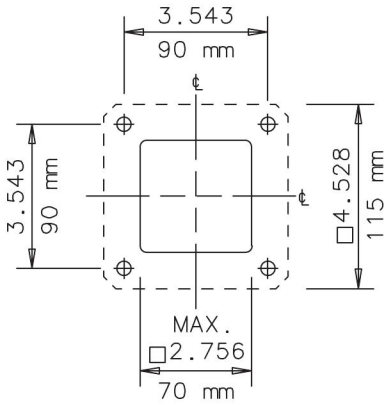
CCS2IJLG



CCS2EHDLG



**Base Mounting Cutout
Niedriger Montage-Ausschnitt
Coupe-circuit Bas De Support
Recorte Bajo Del Montaje**

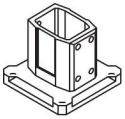


For continuous conductivity please place serrated lock washer according to DIN 6798-A 8,4 (part not included) under fastening screw head.

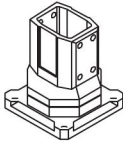
Für durchgängige Leitfähigkeit Fächerscheibe DIN 6798-A 8,4 (nicht im Lieferumfang enthalten) unter Befestigungs-Schraubenkopf legen.

Pour la conductivité continue, placer la rondelle dentelée selon DIN 6798-A 8,4 (pièce non incluse) sous la tête de la vis de fixation.

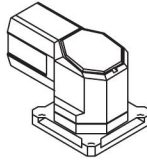
Para conductividad continua, coloque la arandela de seguridad dentada según el DIN 6798-A 8,4 (no incluido) debajo de la cabeza del tornillo de fijación



CCS2WFBLG

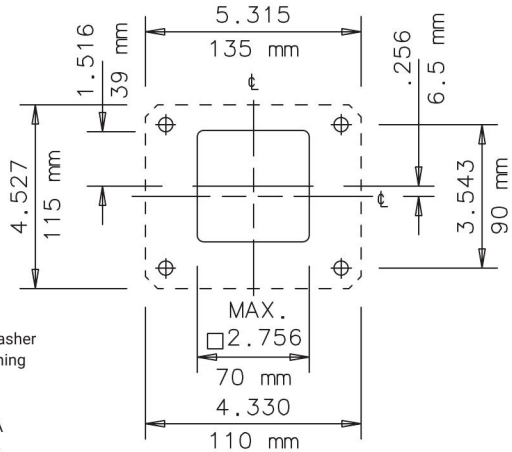


CCS2RBLG



CCS2SJLG

**Base Mounting Cutout
Niedriger Montage-Ausschnitt
Coupe-circuit Bas De Support
Recorte Bajo Del Montaje**

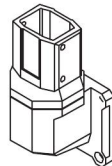


For continuous conductivity please place serrated lock washer according to DIN 6798-A 8,4 (part not included) under fastening screw head.

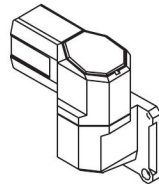
Für durchgängige Leitfähigkeit Fächerscheibe DIN 6798-A 8,4 (nicht im Lieferumfang enthalten) unter Befestigungs-Schraubenkopf legen.

Pour la conductivité continue, placer la rondelle dentelée selon DIN 6798-A 8,4 (pièce non incluse) sous la tête de la vis de fixation.

Para conductividad continua, coloque la arandela de seguridad dentada según el DIN 6798-A 8,4 (no incluido) debajo de la cabeza del tornillo de fijación



CCS2WJVLG



CCS2WJHLG



HOFFMAN

